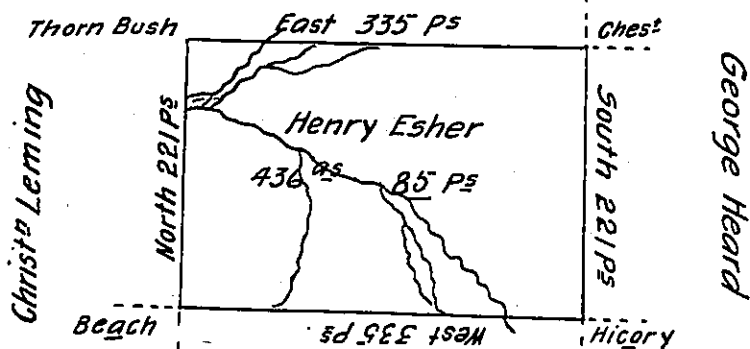


Edward Mc Bride



C-131-30
Jr Mc Bride

In pursuance of a Warrant for 400 acres dated the 26th day of December 1806.
 Was Surveyed for Henry Esher the above Described Tract of Land Containing
 436 acres 89 P's and allowance for Roads at Six per cent on the 29th day of
 October 1807 Situate in Gussewago Township and County of Graw (obliterated)

James Miller D.S.

To Mr Saml Cochran
 Surveyor General of Penns^a

IN TESTIMONY that the above is a copy of the original remaining on file in
 the Department of Internal Affairs of Pennsylvania, made
 conformably to an Act of Assembly approved the 16th day of
 February, 1833, I have hereunto set my Hand and caused
 the Seal of said Department to be affixed at Harrisburg,
 this..... first..... day of..... September..... 1904.

Isaac P. Brown
 Secretary of Internal Affairs.